



ASX-8000

OEM Autosampler

CHEMISTRY WORKSTATION

CETAC AUTOMATION



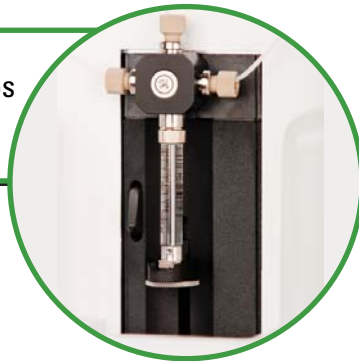
ASX-8000 OEM AUTOSAMPLER

The ASX-8000 Autosampler is a versatile workstation which combines features from a variety of automation techniques. This flexible, highly-customizable XYZ robot can be applied to a wide range of OEM applications, including HPLC, UHPLC, LC-MS, fraction collection, micro-sampling, buffer exchange, sample chemistry and more.

The ASX-8000 platform is designed to be tailored just for you. Various components such as valves or syringe pumps can be configured to your needs. CETAC can even incorporate components from a preferred manufacturer—whatever your application requires. Here are just some of the options available to make the ASX-8000 platform the perfect fit for your application.

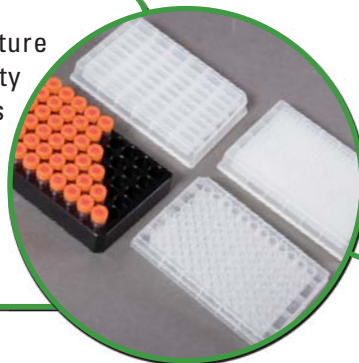
SYRINGE PUMP

Accommodates 1, 2 or 3 syringe pumps with a wide range of syringes available.



TRAY OPTIONS

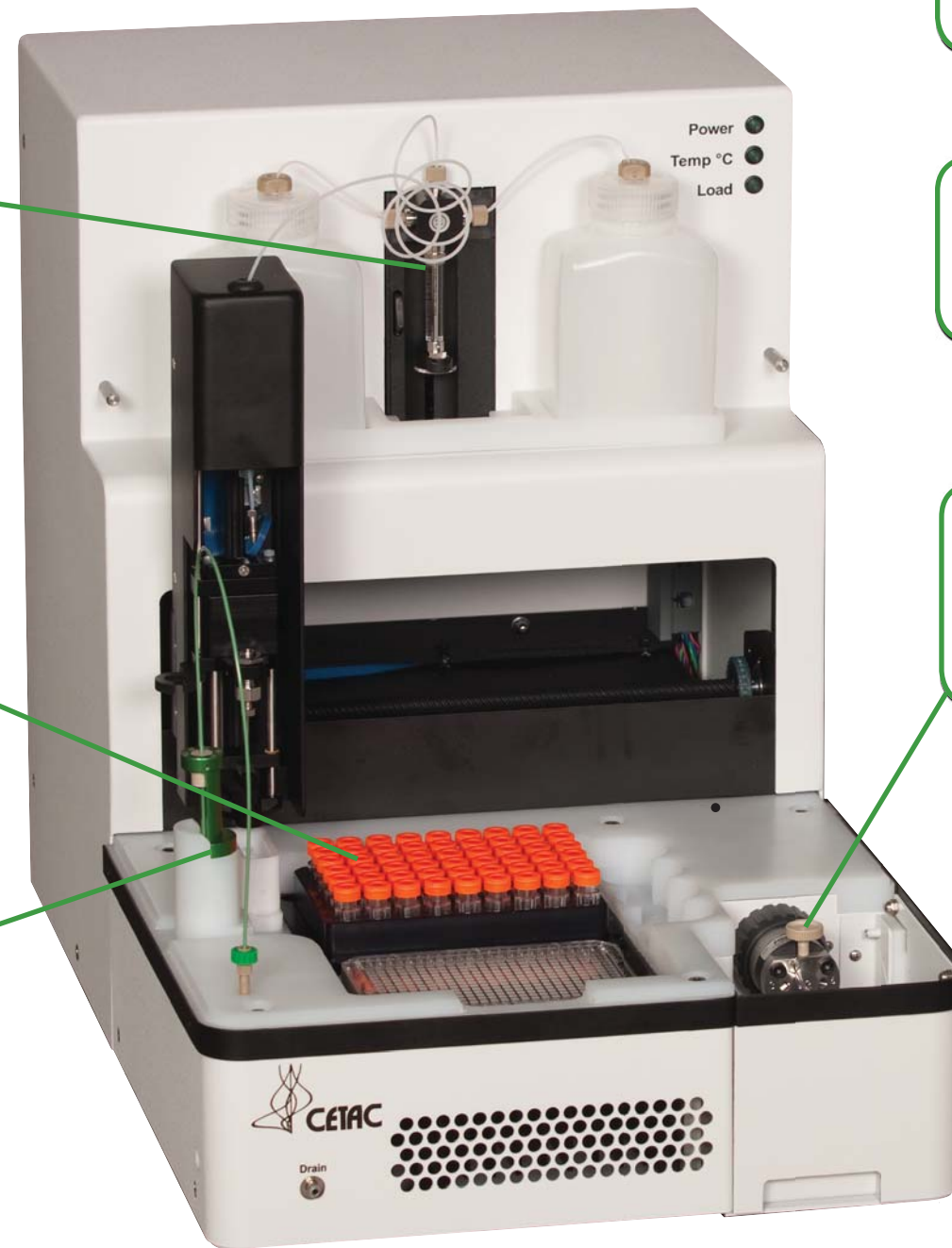
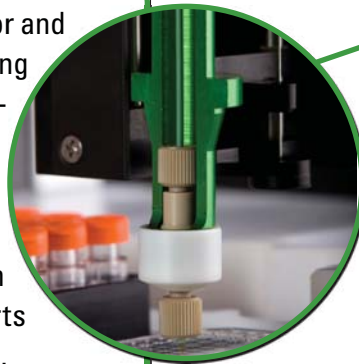
ASX-8000 utilizes a pair of temperature controlled plates with the flexibility of VT54, 96 and 384 well plates. This gives the user the ability of running 108 standard 2ml vials or up to 768 samples depending on sample size. Custom racks are also available.



TECHNIQUES

Fraction Collection: A fraction collector and autosampler in one platform, combining the 2 techniques to allow for multi-dimensional chromatography.

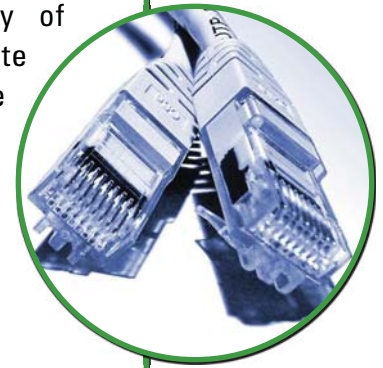
Injection Valves: Easily configured for different applications ranging from standard pressure HPLC to ultra high pressure UPLC (15,000 PSI). Supports valves by Rheodyne, Valco, and others.



COMMUNICATIONS

Wide ranging and flexible array of interface options to accommodate any application. CETAC has the experience of completing over 100 interfaces, including:

- USB
- RS-232 / RS-485
- IEEE and /or GPIB
- Ethernet
- 5 Input/Output
- Custom communications



TEMPERATURE CONTROL

Allows for independent cooling and/or heating of sample trays for a wide range of applications. Computer controlled temperatures can be set from 1°C to 40°C with an accuracy of +/- 0.5°C.

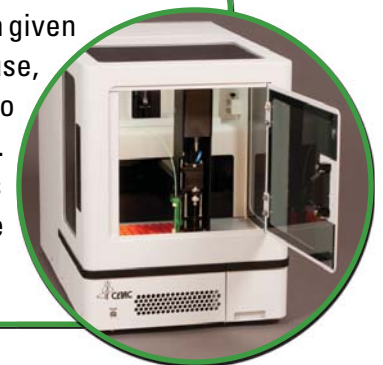
DIRECT SAMPLE INJECTION

Saves valuable sample and dramatically reduces carry over by aspirating a user-defined aliquot of sample and injecting directly into the sample loop.



CLEAN

Careful consideration has been given to the operator's ease-of-use, from the location of the valve to extra doors to access samples. Protects exposed samples from contamination while allowing for easy access.





Performance Data

Carryover : $\geq 0.005\%$ (Methylparaben; 25% isopropanol)

Accuracy: $R^2 = 0.9999$ (Methylparaben)

Precision: $RSD = 0.25\%$ (Methylparaben)

Technical Specifications

Dimensions:

42.5 cm (H) x 33.7 cm (W) x 53.3 cm (D)
16.7" (H) x 13.3" (W) x 21.0" (D)

Weight:

13.6 kg (30 lbs)

Power Requirements:

100-240 VAC +/- 10%, 4.4A

Communications:

USB, Ethernet, RS-232/RS-485, IEEE-488 and/or GPIB

Warranty:

2 year limited with 24 hour replacement available

Ordering:

To discuss your specific needs,
please contact CETAC at oem@cetac.com.

CETAC Automation
14306 Industrial Road
Omaha, NE 68144 USA